



zInspector

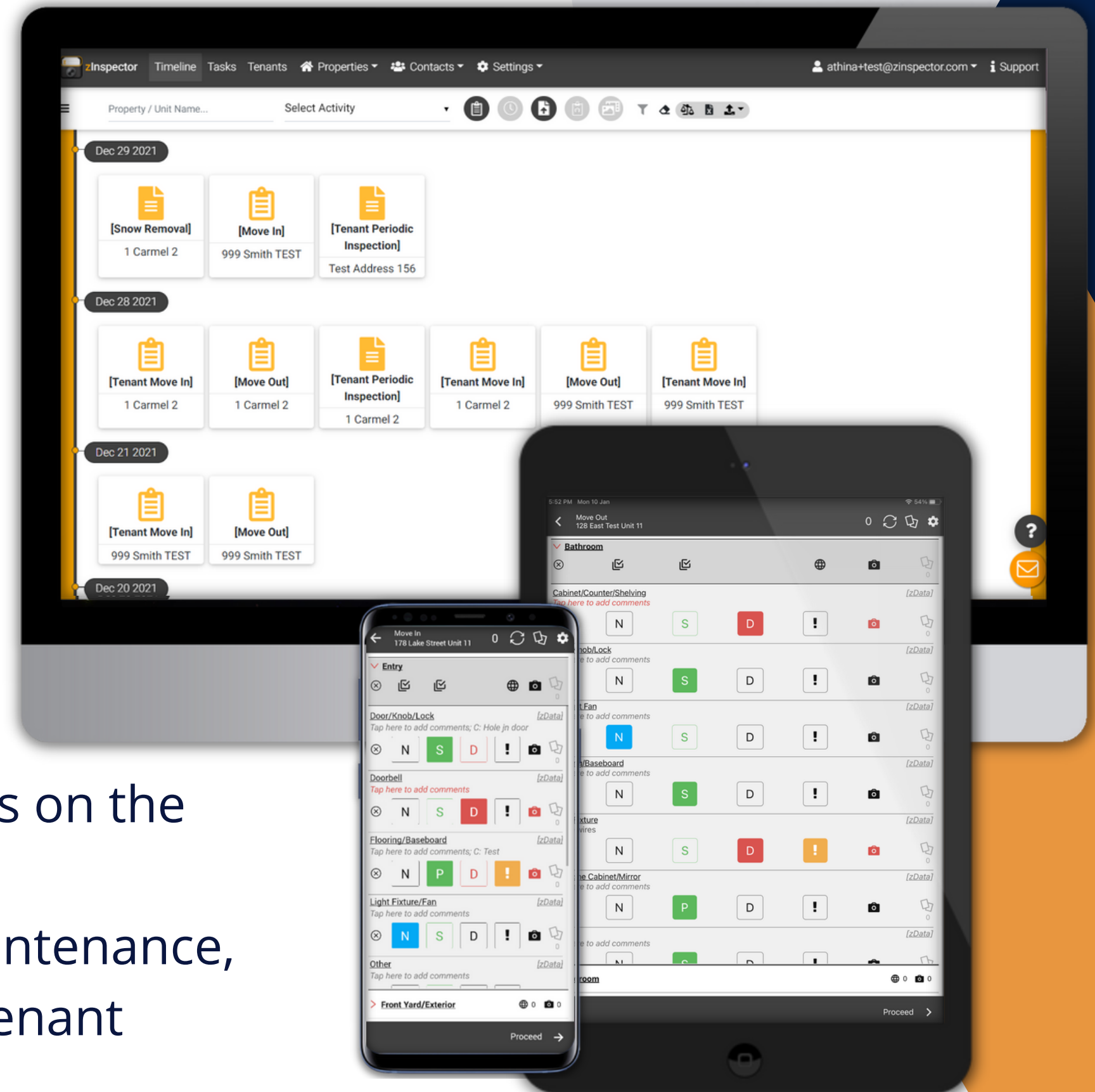
zData Webinar

What is zInspector?

zInspector is a **powerful field-to-office property inspection solution for property managers, contractors, and real estate/rental agents.**

PMs and inspectors can perform inspections on the mobile app.

Office admins can coordinate tasks and maintenance, manage inspection data, invite tenants to Tenant Completed Inspections, etc., on the website.





zData Webinar

Speaking today:



Athina Gkouziadi
Training & Onboarding
Specialist



Andrew Wallace
CEO & Founder

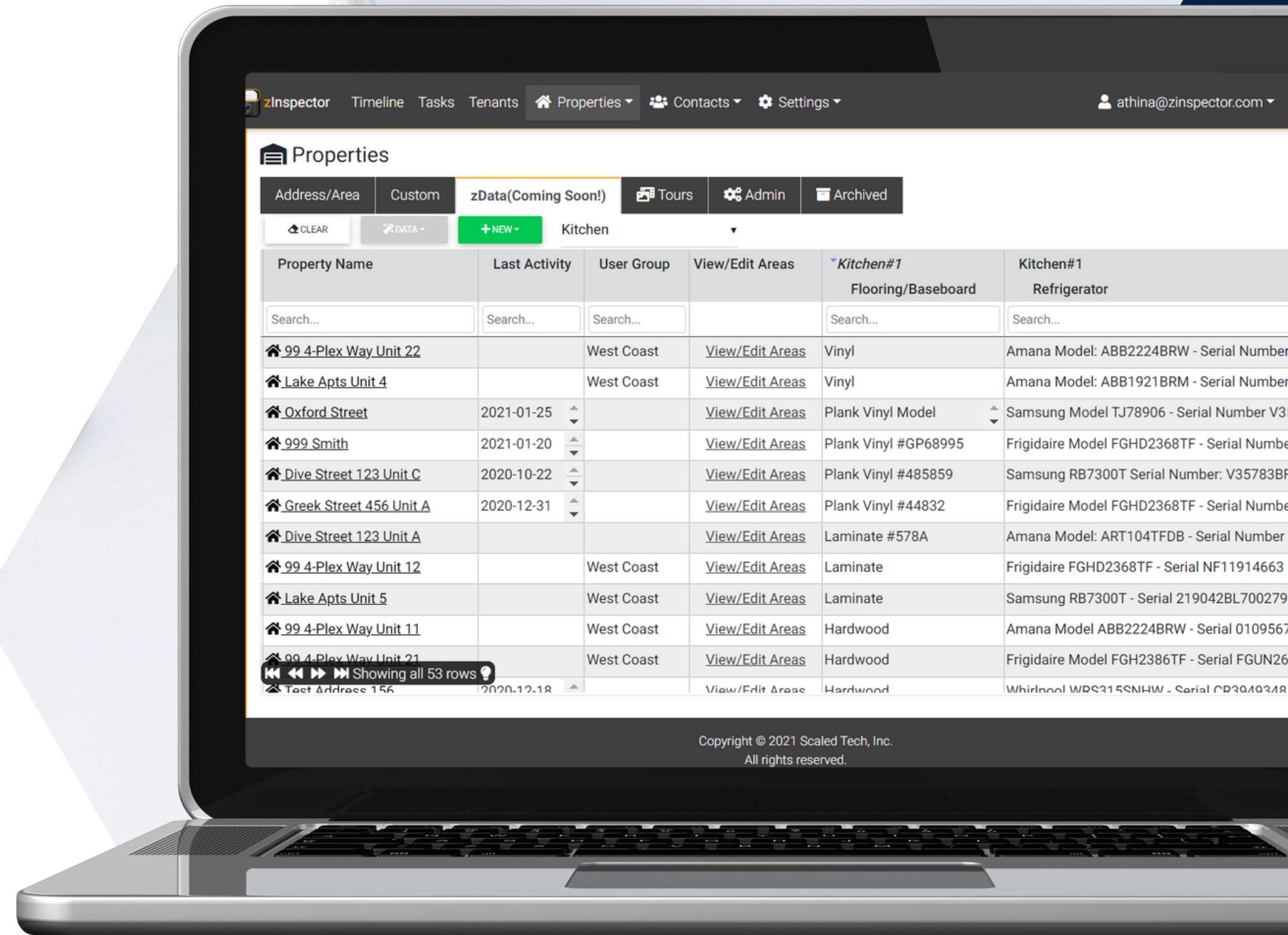


zData:

Quick-capture property attributes such as:

- appliance model & serial numbers
- flooring SKUs
- paint colors
- and much more...

Reference and edit all that data for thousands of properties offline, on the app and website, and across all your devices!



Sample Workflow

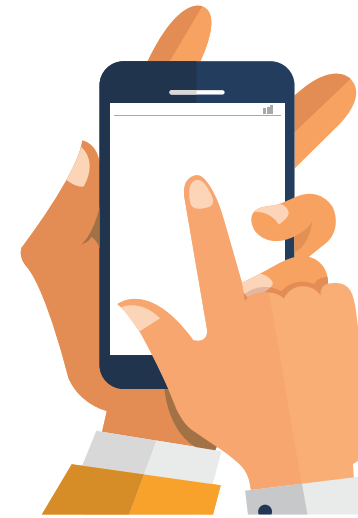
Enter once...search, edit, and reference everywhere!



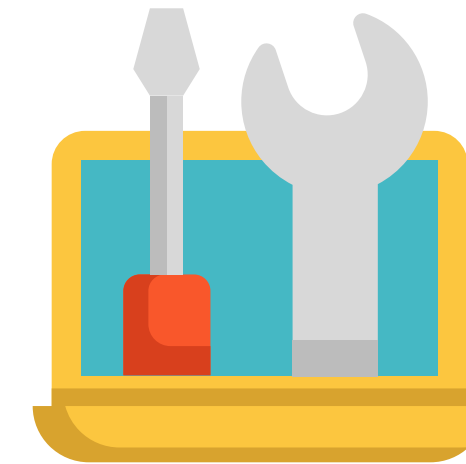
Your **leasing agent** is performing the New Property Setup Inspection and fills in the HVAC filter size, refrigerator make, model and serial number, the the sewer cleanout location, etc.



The **admin assistant in the office** can reference, and edit the HVAC filter size.

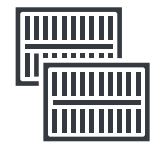


Your **inspector** is doing the **Move Out** inspection and can now see and compare that data.



Your **maintenance coordinator** can access all that data as needed.

zData Examples:



HVAC Filter Sizes & Locations



Smoke Detectors Install Dates



Water Heater Location



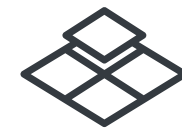
Thermostat Location



Sewer Cleanout Locations



Appliance Model & Serial Numbers



Floor Types



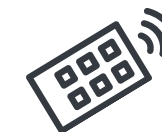
Paint Color SKUs



Lockbox Codes

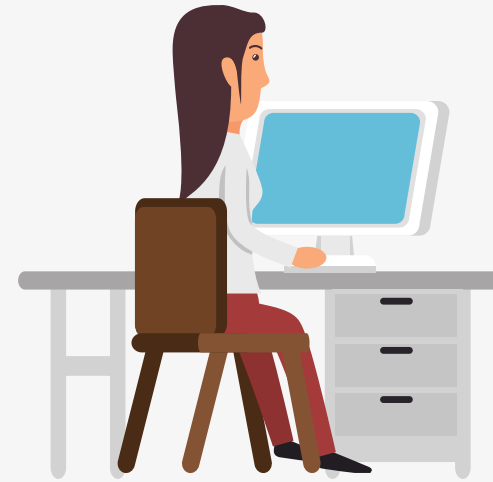


Number of Keys

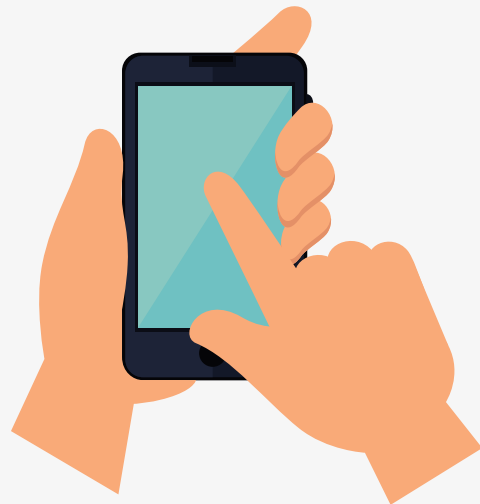


Number of Remotes

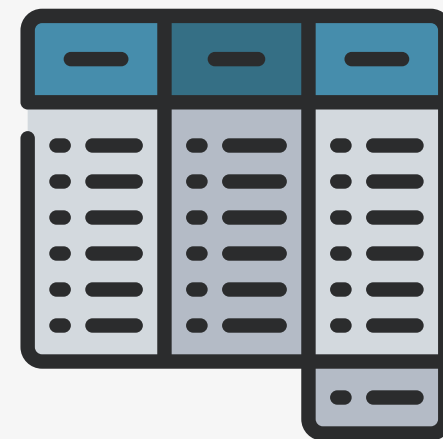
Automatic Sync Across All Devices



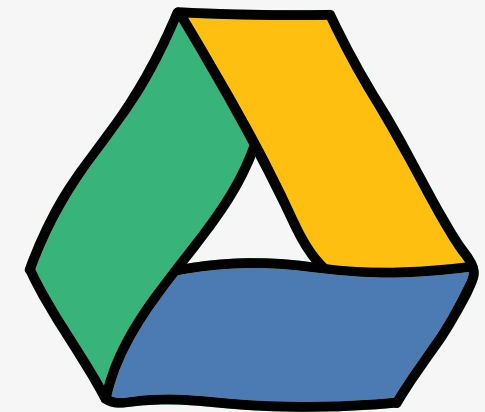
Properties Page
on the Website



zInspector App



zData Dashboard



Google Drive
Sync

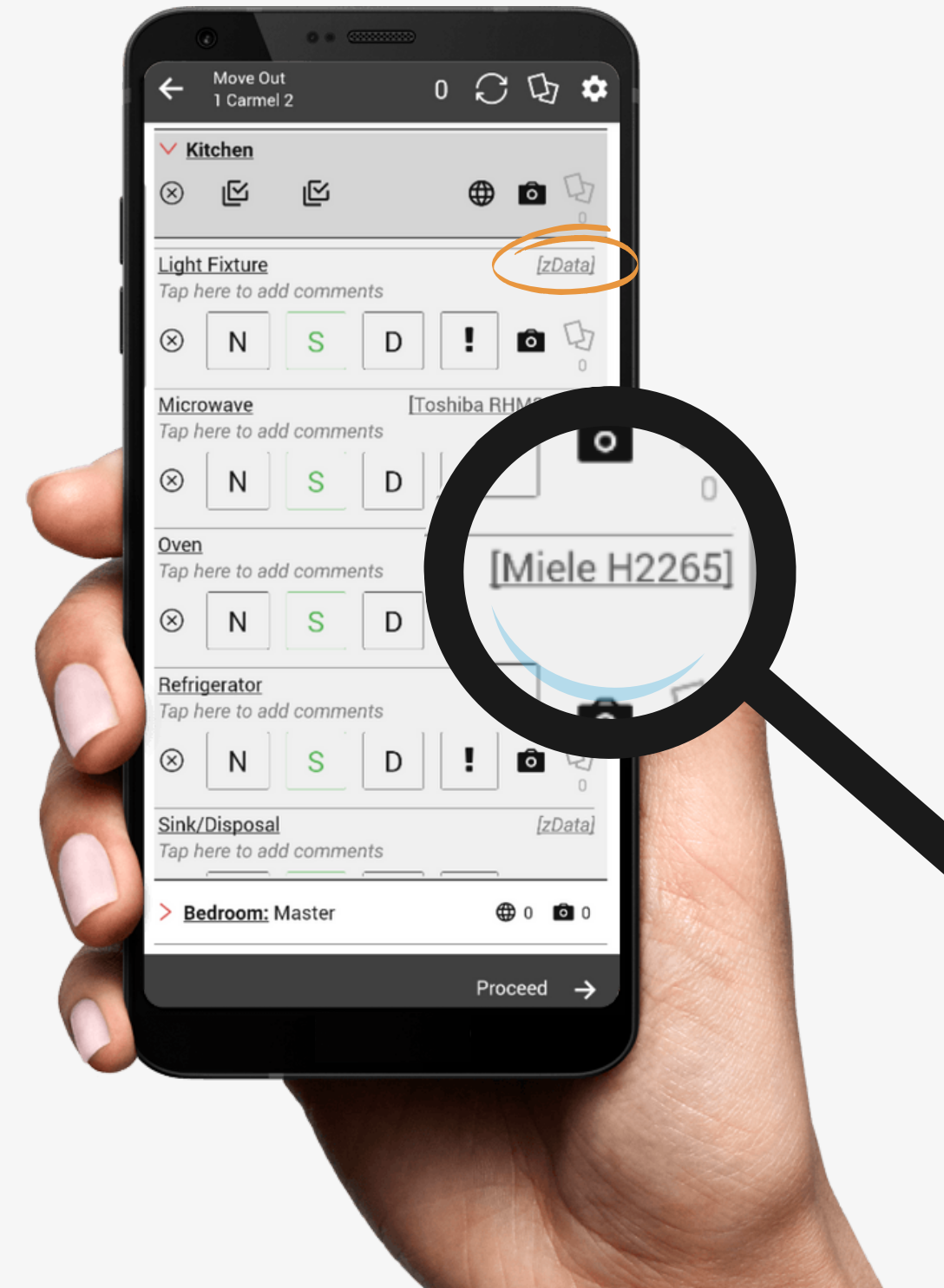
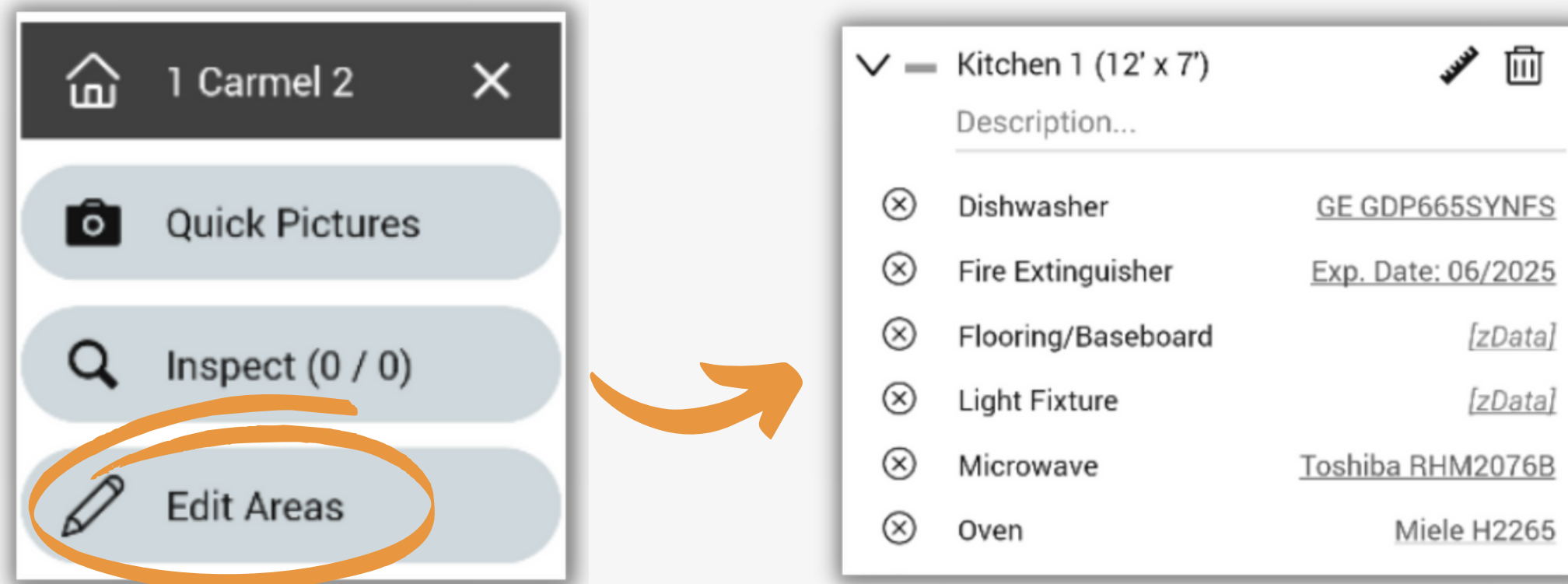


zInspector Mobile App

Easy offline access

You can access zData in two spots:

- 1 In the property layout mode, **under Edit Areas.**



- 2 When you are performing an inspection, **right in your inspection templates, at the right of each Area Detail.**

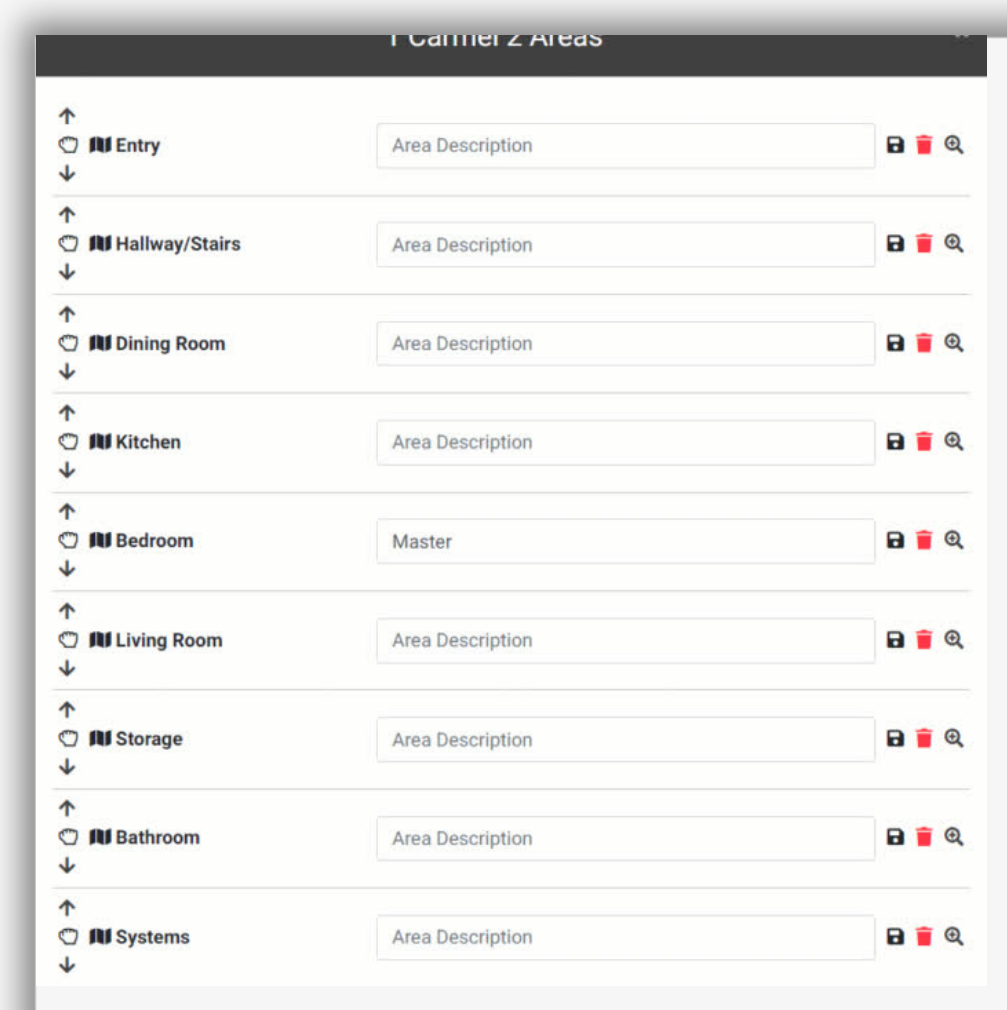
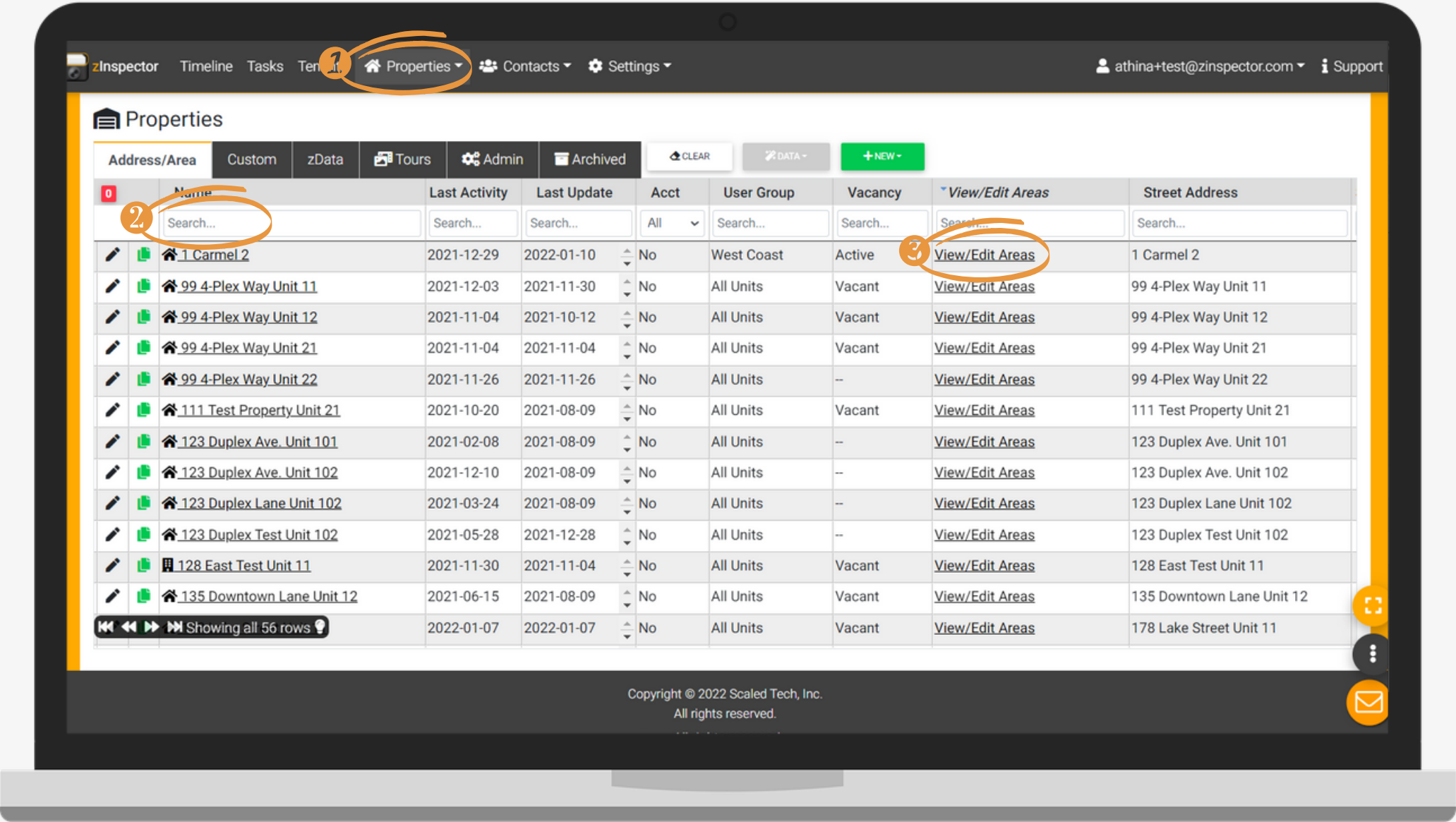
Properties Page on the Website

- 1

Go to the Properties page on the website.
- 2

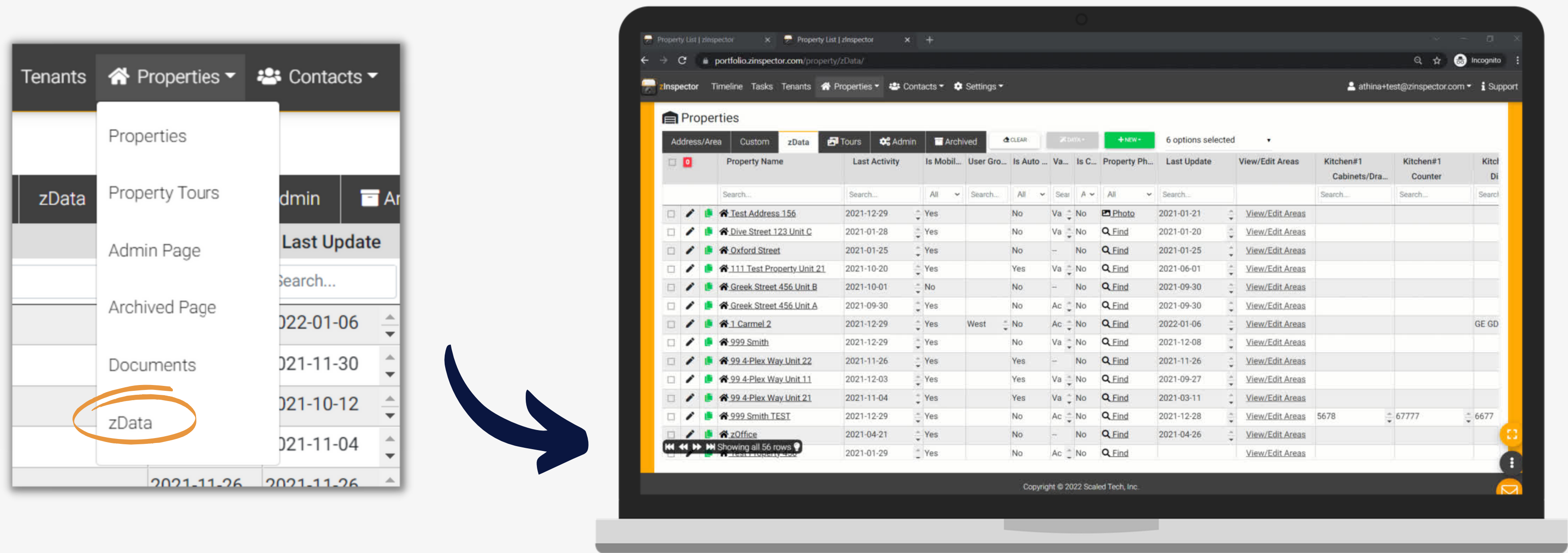
Search for a property and click on **View/Edit Areas**.
- 3

Expand each Area by clicking on the Magnifying Glass icon and **enter zData**.



zData Dashboard

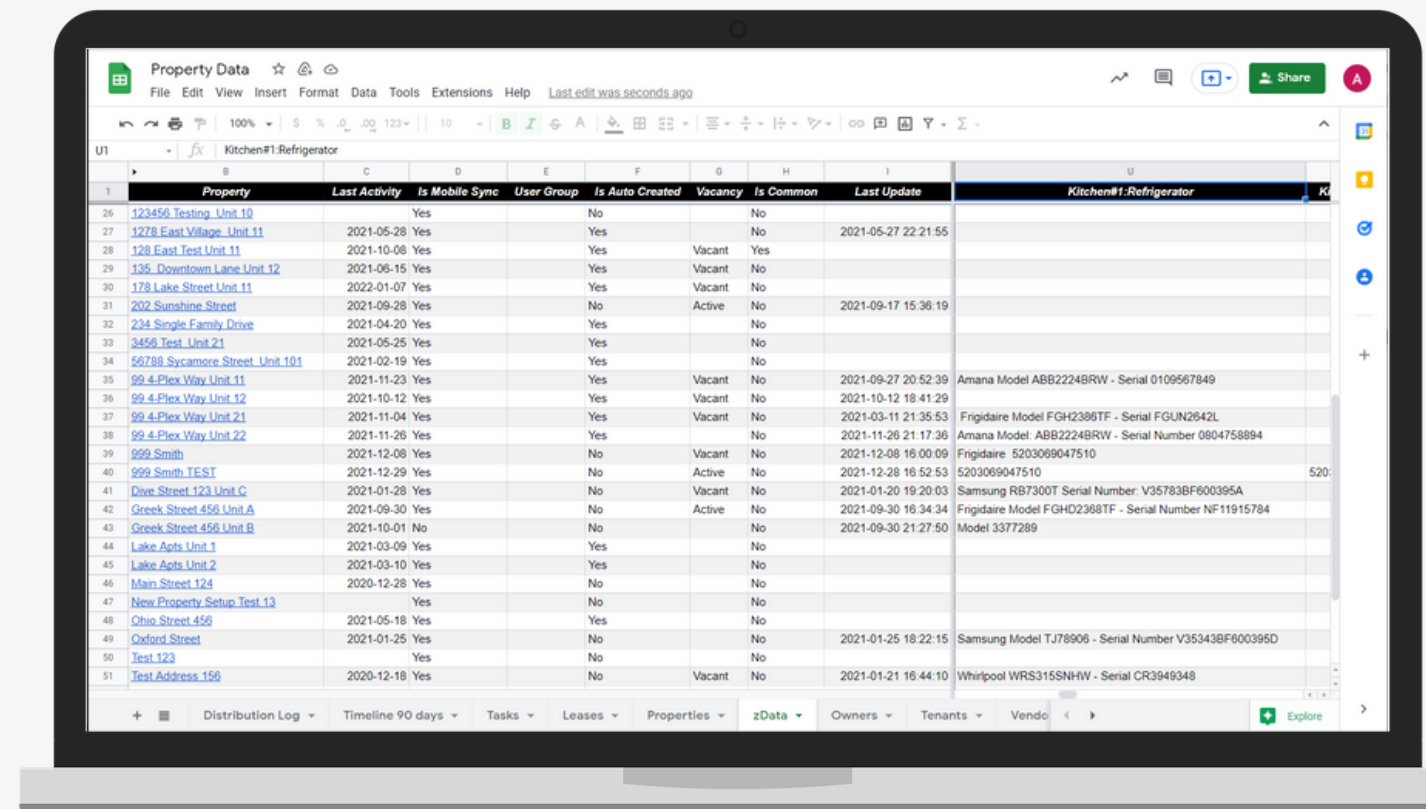
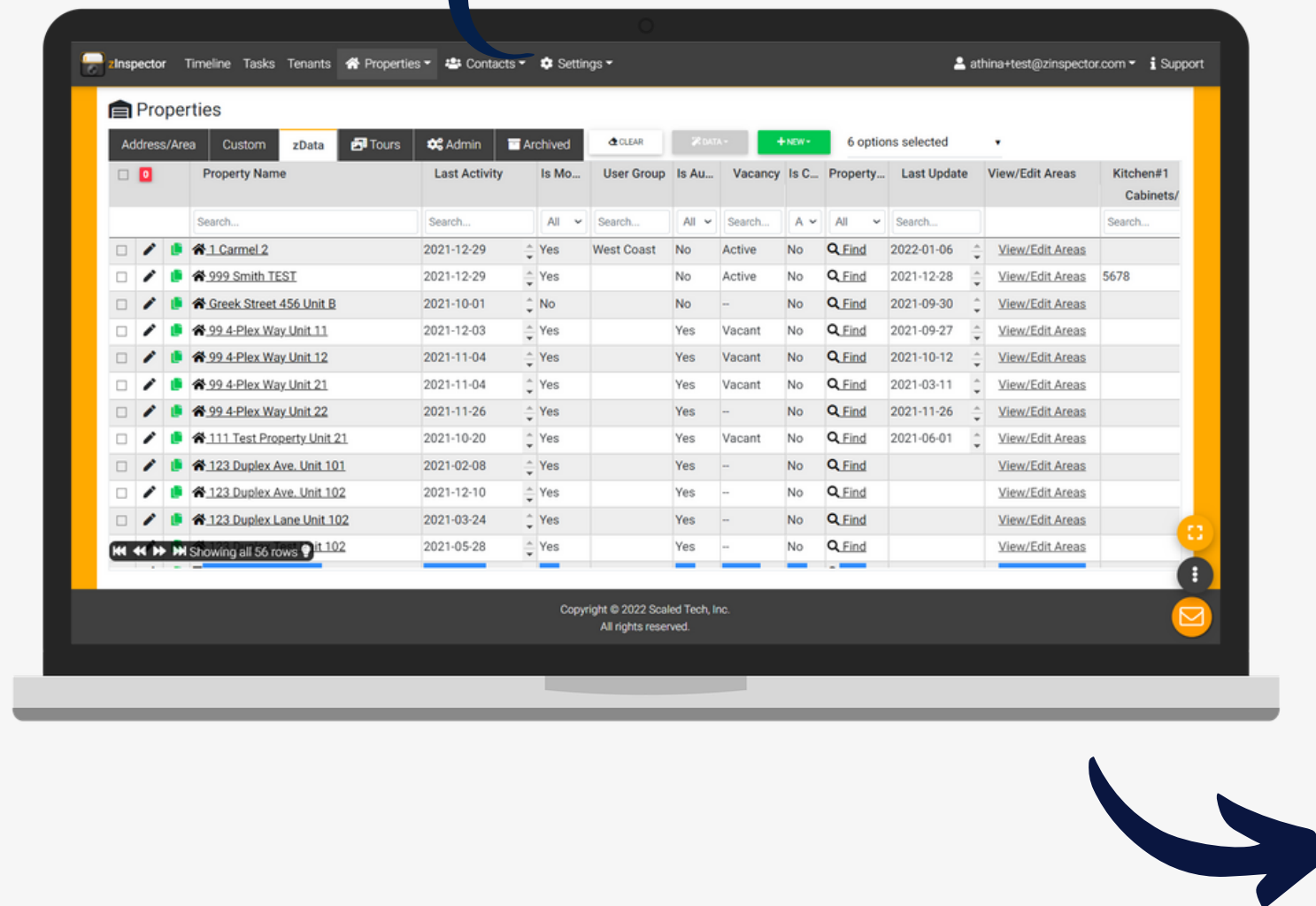
The **zData dashboard** uses a **unique technology** to facilitate search through hundreds of thousands of items. Columns will automatically add as you add zData.



Google Drive Sync

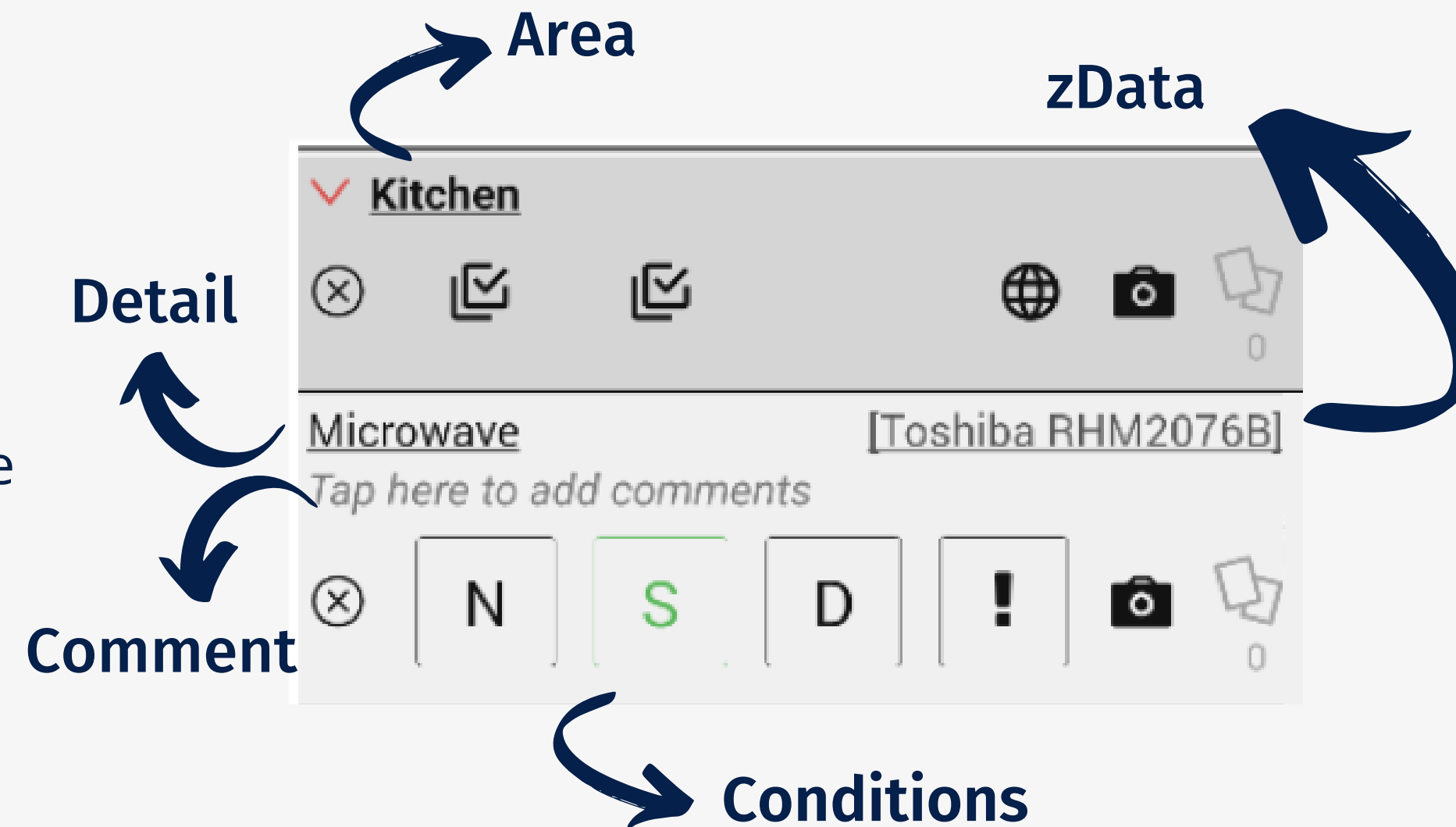
The **zData dashboard** can sync to a Google Drive spreadsheet, making it accessible and searchable by anyone on your team.

Settings → GDrive Sync



Definitions: Areas - Details - Comments - Conditions - zData

- **Areas:** Areas are defined inspection spaces or other elements within the property, such as Bedroom.
- **Details:** Details focus on specific items within an Area, for example: Door/Knob/Lock.
- **Conditions:** Conditions are used to document the condition of a Detail within an Area.
- **Comments:** Comments are used to describe the condition of a Detail during the inspection.
- **zData:** zData is used to store attributes of the property related to the specific Details.

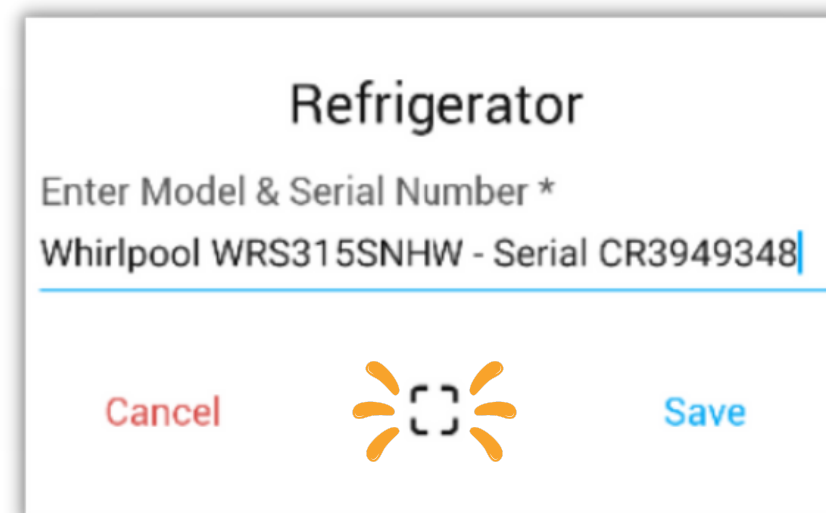
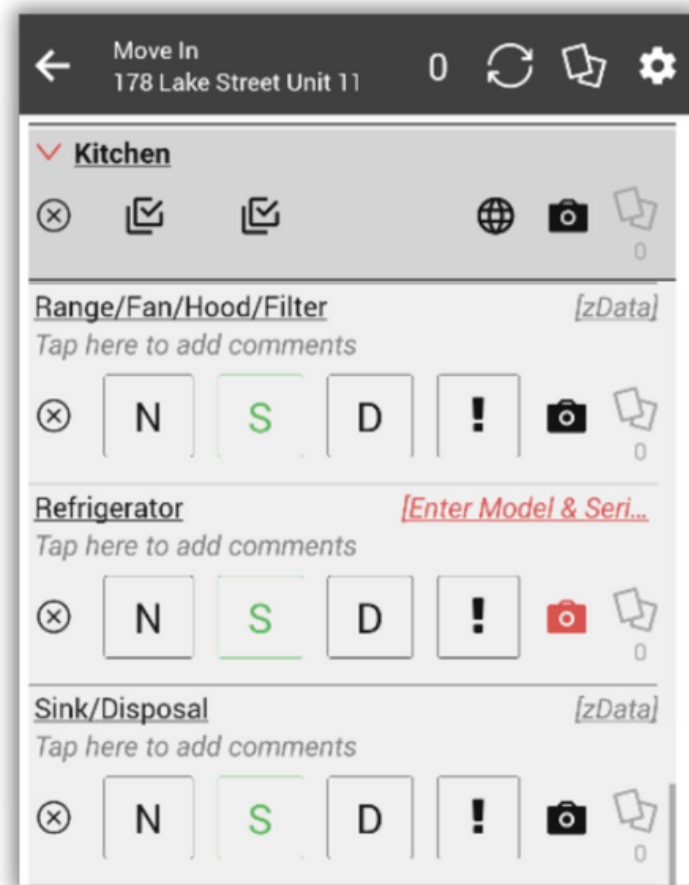


Advanced Tips!

Require zData to be entered.

You can have specific zData fields and camera buttons be required for just the first property inspection.

Once the information is added, the field will no longer be required for future inspections!



Pro Tip: Barcode & Text Scanner



Scan appliance serial numbers and automatically save the label as a picture.

How to require zData:

<https://support.zinspector.com/article/zdata-detail-level-characteristics/>

Default Template Update

Coming Soon!

➤ **New Property Setup**

The New Property Setup template will include specific zData fields to allow you to enter all the zData information you need. All the data will show up automatically in any future inspection, such as Move In, Move Out, etc.

➤ **Tenant Completed Filter Capture**

The Tenant Completed Filter Capture template (for Tenant Completed Inspections) will require tenants to add data specific to Air Filters, such as filter sizes.



Questions?

- **How to add zData to your inspection templates:**

<https://support.zinspector.com/article/zdata-detail-level-characteristics/>

- **Schedule a personalized web-conference:**

<https://support.zinspector.com/webconference/>

- **Contacts us:**

support@zinspector.com





WEBINAR

by



zInspector